

Diary Cow Handbook

General Appearance Topline and Rump

General appearance is the overall attractiveness and beauty signified by correct structure and smooth blending of all parts. Breed character, femininity, vigor, stretch, scale, impressive style and carriage are also important in evaluating general appearance.

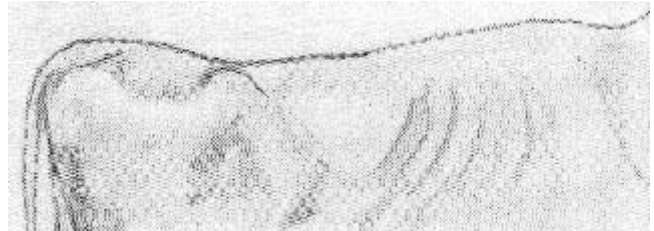
Topline and Rump

The back and rump should be strong and straight. The vertebrae should be clearly defined in the back. The rump should be wide from one hip bone to the other and wide at the pins. The rump should be long and level from hips to pins with a smooth, squarely set tail head. The thurls should be high and full and the rump clean and free of excess flesh.

Excellent Topline that is strong and straight with high full thurls.



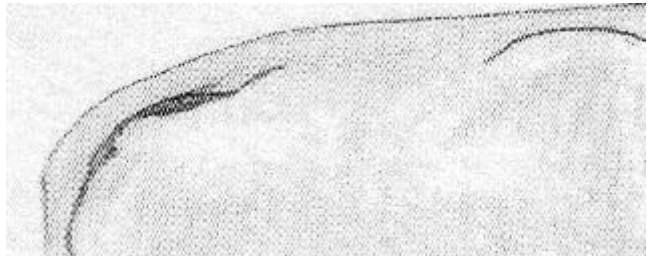
Weak at the loin and high at the tail.



Acceptable strong and straight topline, but a bit rough with weak thurls.



Sloping from hook to pins and patchy across the rump.



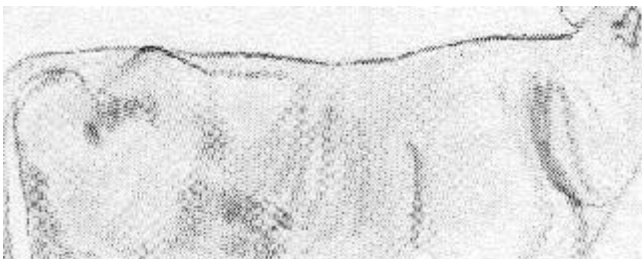
Excellent rump that is long and level from hooks to pins. High and wide thurls.



High tail head setting with low, weak thurls.



Weak in chine and a sloping rump



Prominent hooks and pins.
Wide at the pins.

