

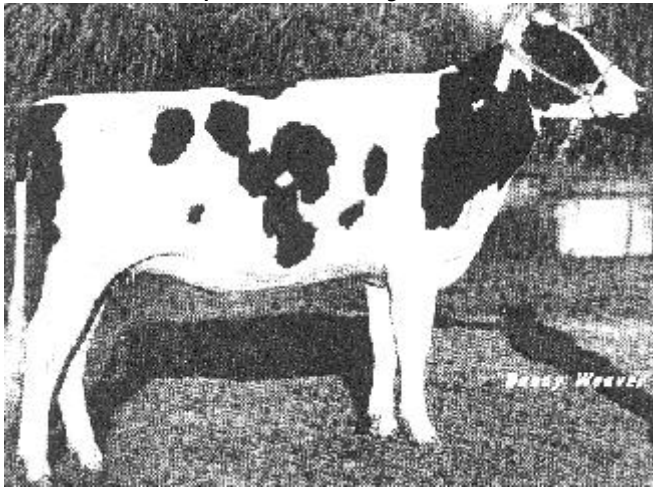
Diary Cow Handbook

Dairy Character

Dairy character is an indication that the cow converts feed into milk rather than body flesh. Dairy cattle are bred for this purpose and high producers can not eat enough feed to gain in flesh during most of the lactating period. Cows in later lactation, or during the dry period and spring heifers must be given due allowance for carrying more flesh. Thinness due to under-feeding should not be confused with dairy character.

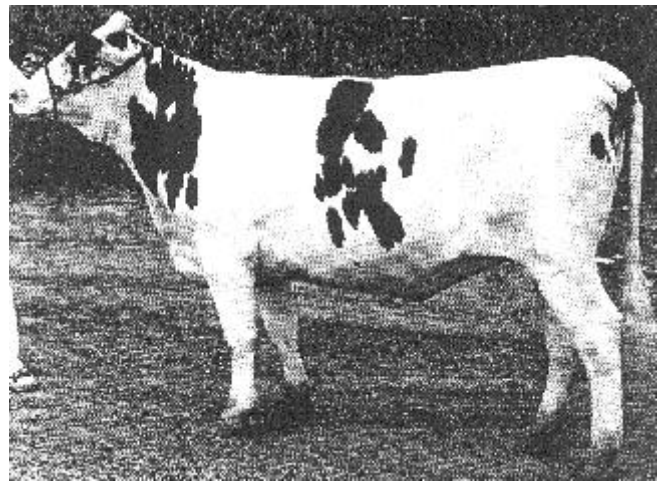
Dairy Character is signified by freeness of flesh; sharpness at the withers; incurving, flat thighs set wide apart; loose and pliable skin; long, lean, smooth blending neck; clean cut throat, dewlap, and brisket; wide, flat and well spaced ribs; and deep and refine flanks.

Acceptable Dairy Character



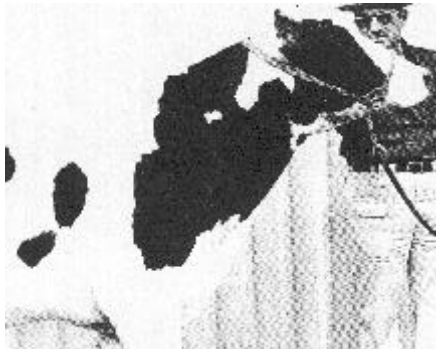
Note her length of neck, sharpness over the withers and cleanness throughout.

Poor Dairy Character

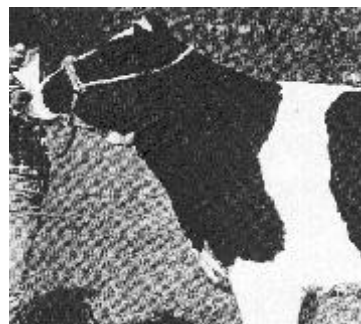


This heifer has a short heavy neck and throat, is thick in the thighs, patchy over the pins and meaty over the rump.

This heifer has a long clean neck.



This heifer shows an extremely short neck and heavy throat.



Outstanding.

Note the sharpness of withers and cleanness over the hips and pins and flatness of the thigh.

Over Conditioned

Carrying too much flesh. She is smooth and round over the withers and lacks bold and clean hips and pins.

