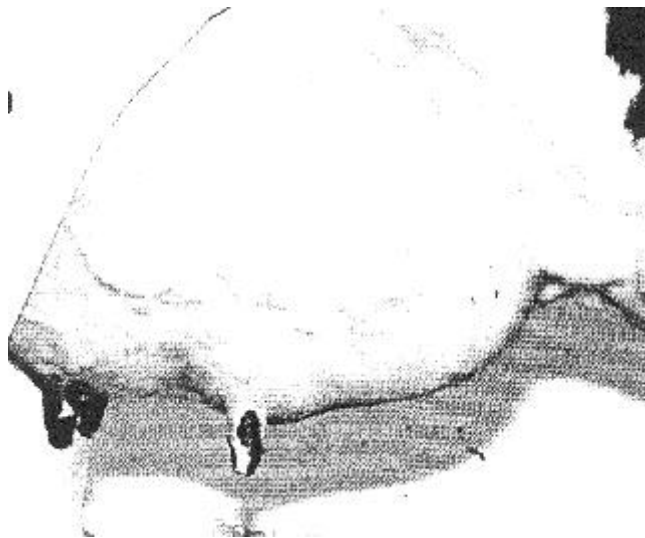


Diary Cow Handbook

Differing Mammary System

Short and abruptly attached fore udder with misshaped rear udder limits capacity. Teats are too long and udder lacks overall symmetry and quality.



The fore udder is bulgy and the attachment is loose. It is also deep and shows more fullness in the fore than in the rear quarters.



Tilted udder floor with bulgy fore udder and short fore attachment.



This udder is below the hocks and is deep in the rear and fore quarters.

Ill shaped teats and udder is halved.



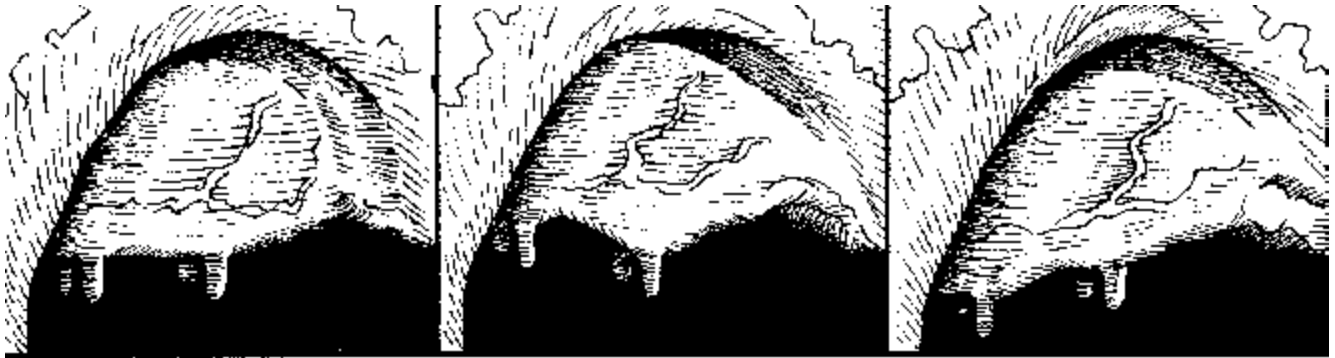
Lack of medial suspensory ligament shown by no crease on udder floor also a weak and broken fore attachment.



This udder tilts forward and is very weak in the fore udder attachment.

Differing Mammary Structures

UDDER FLOOR



CORRECT

**Unbalanced Udder Floor
(Forward Tilt)**

**Unbalanced Udder Floor
(Rear Tilt)**

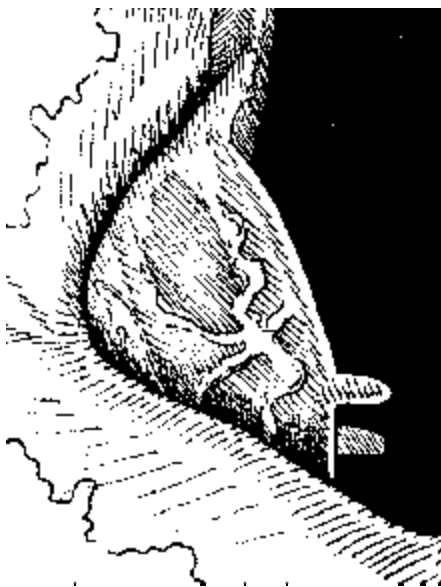
TEAT LENGTH



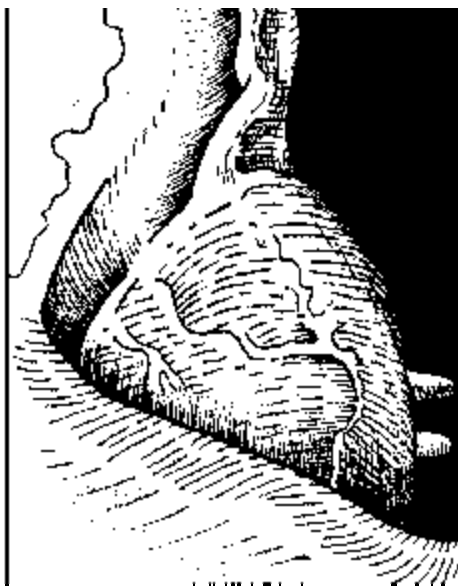
CORRECT

Too Long

Too Short



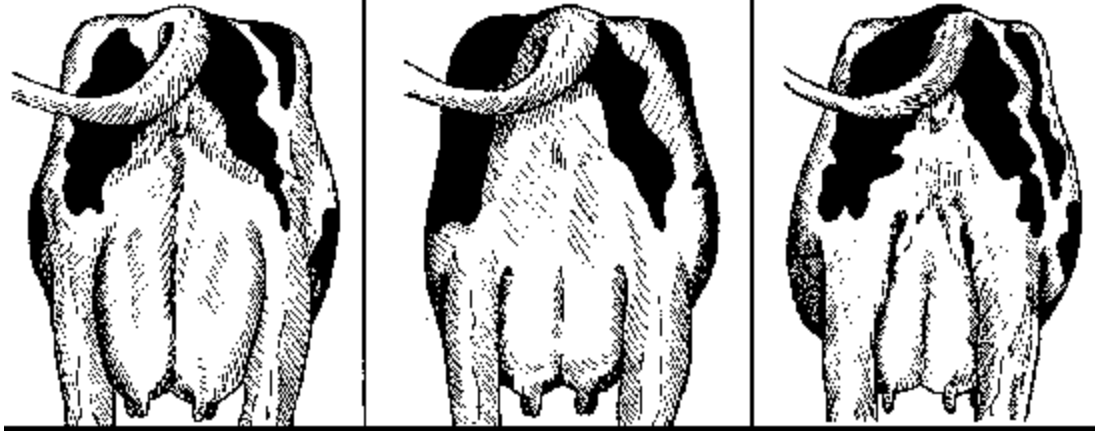
**CORRECT
Tight Fore
Udder Attachment**



**Bulgy Fore
Udder Attachment**

Differing Mammary Structures

REAR UDDER ATTACHMENTS

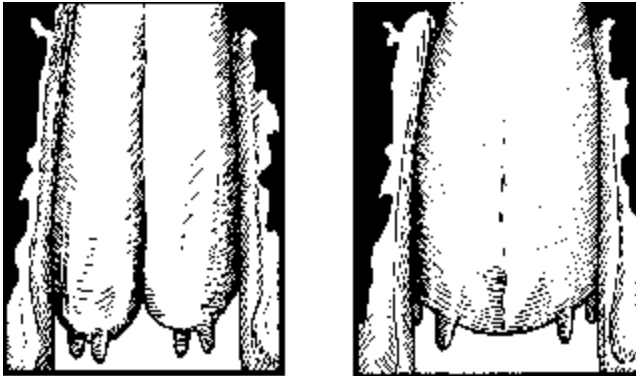


IDEAL
High, Wide Udder

Low Udder

Pear-Shaped,
Narrow Udder

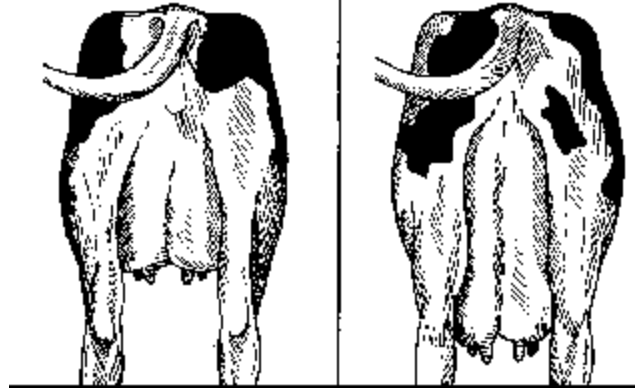
CENTRAL LIGAMENT



IDEAL, Strong

Broken Cleft

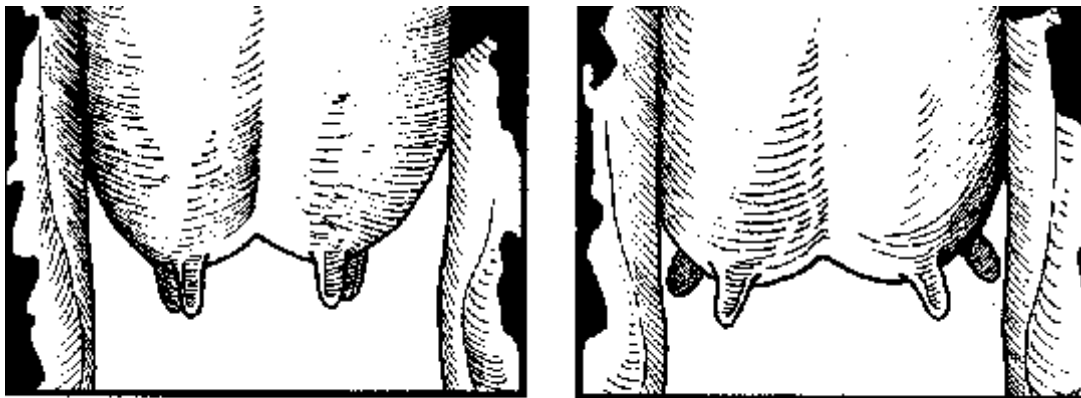
UDDER DEPTH



IDEAL, Shallow Udder

Deep Udder

TEAT PLACEMENT



CORRECT

Strutting