

# *Diary Cow Handbook*

## Breed Character

Breed character indicates that the cow conforms to the standards set forth by the breed organizations for size, color and other attributes.



Fig. 8. This is an example of an excellent Ayrshire head. She has a strong jaw and wide muzzle, and expresses dairy quality with strength.

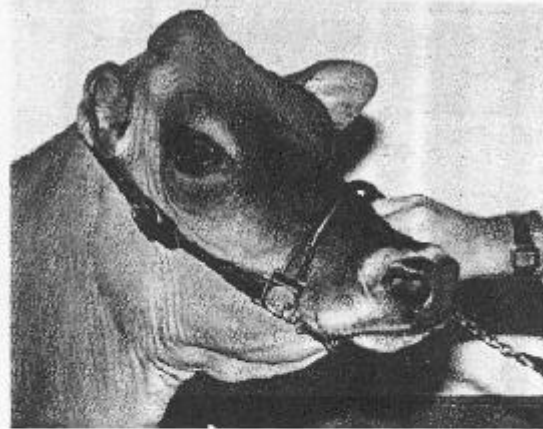


Fig. 9. This is an excellent example of Jersey breed character. Note the dish of forehead as measured between the eyes as well as from nose to the pole.



Fig. 10. This Brown Swiss cow has an excellent head. She, too, is strong in the muzzle, wide between the eyes with much strength and femininity.



Fig. 11. This is an example of excellent Guernsey breed character. Note the strength of muzzle, width between the eyes, and slight dish of forehead.

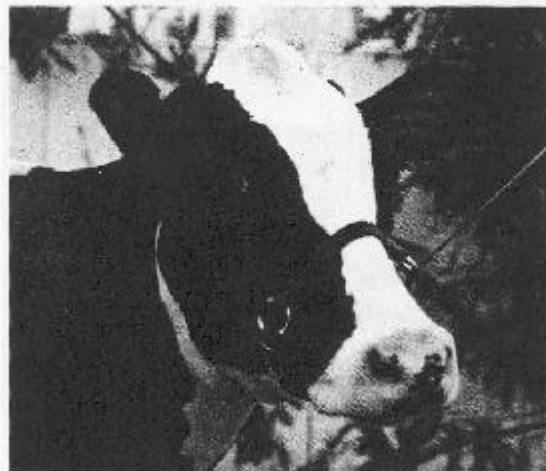


Fig. 12. This cow's head is an example of excellent Holstein breed character. It is strong with well-proportioned length and width, with a bright, attractive eye.



Fig. 13. This Milking Shorthorn has an excellent head. Note the wide muzzle, slight dish of forehead and bright eye.