

# **Beef Handbook**

## **Judging Market Beef Cattle**

Major Importance

Secondary Importance

**From the side view you should look for the following:**

Size of Frame  
 Length of Body (Type)  
 Balance and Style  
 Straightness of lines  
 Length, Depth and Fullness of Quarter

Length and levelness of rump  
 Depth of body  
 Uniformity of depth of body  
 Straightness of legs  
 Size of bone  
 Strength of top  
 Trimness about the middle, brisket, tail setting, etc.

**From the rear view look for the following:**

Thickness across Rump, Loin and Back  
 Depth, Width, Fullness and Thickness of Quarter

Smoothness of fleshing and uniformity of width  
 Squareness (fullness) of rump  
 Width between hind legs  
 Muscling in the inner and outer gaskin  
 Straightness of rear legs and size of bone in rear cannon  
 Spring of rib  
 Trimness of middle (steers only)

**From the front view observe the following:**

Width and Depth of chest

Shape of head as well as breed & sex character exhibited  
 Spring and fullness of forerib  
 Smoothness of shoulders  
 Strength and straightness of front legs  
 Size of bone in fore cannon

**While handling a judging class you should determine the following (market cattle)**

You may not be allowed to handle all classes.

Amount and uniformity of finish over rump and around the tail head.

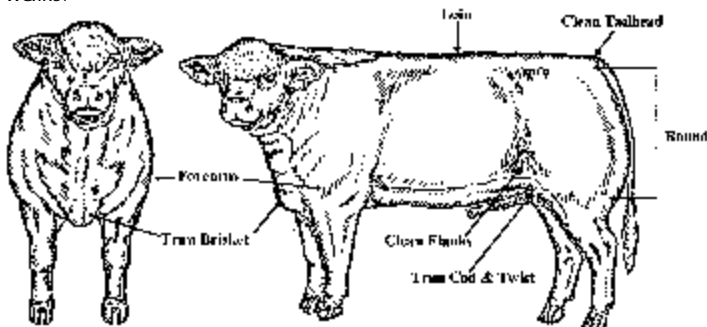
Smoothness of the loin edge.  
 Amount & smoothness of finish over the crops & shoulder.  
 Refinement of hide and hair coat.

Amount and firmness of fleshing and depth of muscling over the loin.

The length of rump, fullness of lower quarter and fullness of fore rib for cattle with a long hair coat.

Smoothness and amount of finish over the back & ribs.

**A trim muscular steer** will have lots of muscling in his hindquarters. His rounds will be long, deep and bulging, when viewed from the side and rear. The forearm is also a good indicator of muscling. He will be trim and tight in his flanks and twist, and will not have large fat deposits in his brisket, cod, and tailhead. His muscles will bulge and move as he walks.



**A fat wasty steer** will look soft and jigglely. He will be deep in his flanks and twist. He will have puffy fat deposits around his tailhead. A heavy deep brisket is one of the best indications of a overfinished steer.